



Screeners for Bullish and/or Bearish Engulfings

Screeners All TimeFrames

Screeners Intraday Multi TimeFrames

Screening the market to find bullish and / or bearish engulfing candles.

You can find all our instructions in video format on our Youtube channel (english subtitles available):


<https://youtu.be/OiWdxWVEWsY>

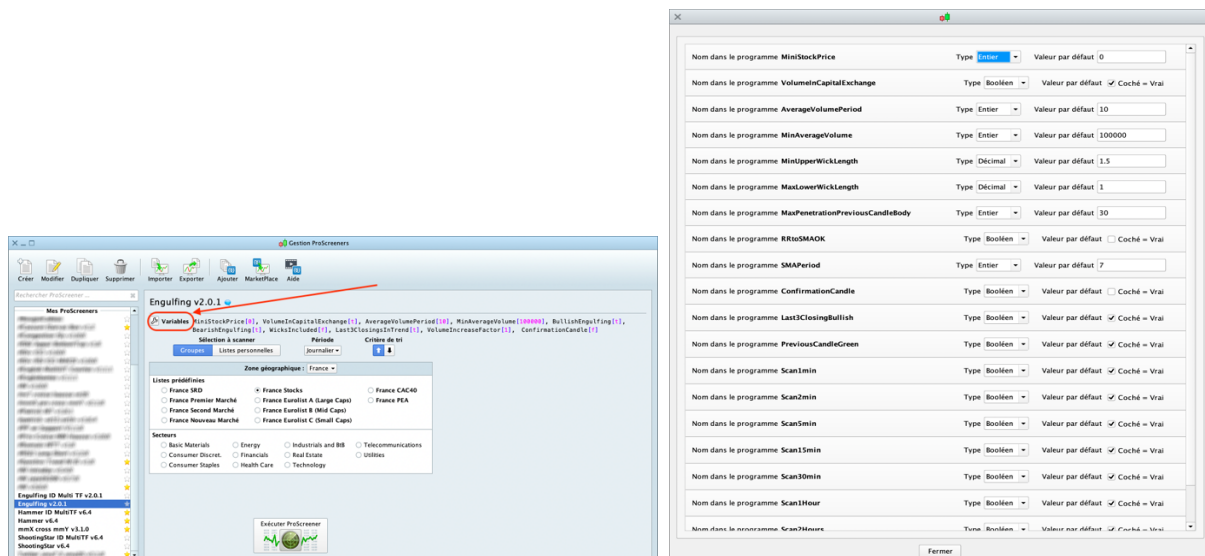
I. User Guide

The settings available are identical on both screeners (All TimeFrame and Intraday Multi TimeFrame).

The All TimeFrame screener scans the market in the timeframe defined by the screener's scrolling menu.

The Intraday Multi TimeFrame screener scans simultaneously up to 8 different timeframes : 1' / 2' / 5' / 15' / 30' / 1 hour / 2 hours / 4 hours (regardless of the timeframe of the screener's scrolling menu, this one will only define the timeframe when opening a graph from the screener result list).

The following parameters can be adjusted in the "variables"  menu:



The values shown above are given as example and do not constitute an optimal or recommended setting, everyone should find his own settings.

General filtering of stocks according to price and volumes (based on the daily timeframe regardless of the screening timeframe):

- MiniStockPrice = Minimum stockprice, not to have penny stock in the results for example.
- VolumeInCapitalExchange = Average volume expressed in capital (checked) or number of exchanges (unchecked). Filtering is done on the average volume to avoid erroneous results due to high volume peaks on a candle.
- AverageVolumePeriod = The period of the average volume,
- MinAverageVolume = Minimum Average Volume for filtering. In number of transactions or capital exchange, depending on the previous settings.

The configurable criterias specific to the search :

- BullishEngulfing = searching for bullish engulfings, Checked = Activated / Unchecked = Disactivated. When this setting is disactivated bullish engulfing are not searched.
- BearishEngulfing = Enabling bearish engulfings, Checked = Activated / Unchecked = Disactivated. When this setting is disactivated bearish engulfing are not searched.
- WicksIncluded = filtering to search for engulfings only if they engulf the entire previous candle, wicks included. Checked = Activated / Unchecked = Disactivated.
- Last3ClosingsInTrend = because engulfing candles are reversal signals, we can activate this filtering to search engulfings only if they appear after a minimum of 3 closings in a trend opposite to the engulfing : the 3 closings before a bullish engulfing must be bearish, end vice versa. Checked = Activated / Unchecked = Disactivated.
- VolumeIncreaseFactor = minimum volume increase factor on the engulfing. It's a filtering to search for engulfings only if its volume is at least equal to X times the volume of the previous candle. Where X is the volume increase factor. For example : if you want the engulfing to have at least 1,5 times the volume of the previous candle, just set *VolumeIncreaseFactor = 1.5*.
- ConfirmationCandle = the screener will return stocks which current candle is a confirmation to the engulfing. So a candle closing higher than the bullish engulfing close and vice versa. Checked = Activated / Unchecked = Disactivated.
- Scan1min to Scan4Hours = independent activation of scanned timeframes (for multi timeframes screener). Checked = Activated / Unchecked = Disactivated.

Results Rankings

Results are classified in the screener list results to be easily checked.

Screener All TimeFrames

Results are classified by the "Long / Short" column as follows :

- 1 = bullish engulfing
- 2 = bearish engulfing

Screener Intraday Multi TimeFrame

Results are classified by the "UT - Long / Short" column as follows :

- 11 = TimeFrame 1' bullish engulfing
- 22 = TimeFrame 1' bearish engulfing

- 21 = TF 2' bullish engulfing
- 22 = TF 2' bearish engulfing

- 31 = TF 5' bullish engulfing
- 32 = TF 5' bearish engulfing

- 41 = TF 15' bullish engulfing
- 42 = TF 15' bearish engulfing

- 51 = TF 30' bullish engulfing
- 52 = TF 30' bearish engulfing

- 61 = TF 1 hour bullish engulfing
- 62 = TF 1 hour bearish engulfing

- 71 = TF 2 hours bullish engulfing
- 72 = TF 2 hours bearish engulfing

- 81 = TF 4 hours bullish engulfing
- 82 = TF 4 hours bearish engulfing



NB: Pay attention to have the same parameters in the indicator and the screener, in order to have the indicator showing screener's result on graph.

DISCLAIMER

Our proposed tools (indicators and screeners) are not investment advices but tools allowing everyone to find specific graphic configurations. Investing in the financial markets involves risks up to and including the total loss of capital.

The user of the proposed tools understands and accepts that the use of these tools is under his sole and entire responsibility. P2C Trading declines all responsibility in the use of the tools and the consequences that would result.