

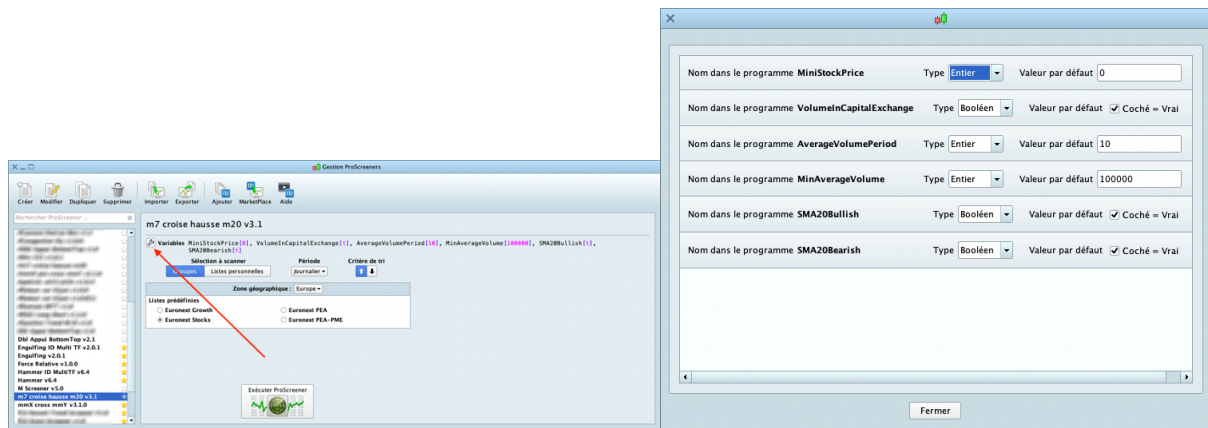


Screener of bullish crossing sma7 / sma20

Screener of bullish crossing simple moving average sma7 over simple moving average sma20. Working on all TimeFrames.

I. User Guide

The following parameters can be adjusted in the "variables"  menu:



The values shown above are given as example and do not constitute an optimal or recommended setting, everyone should find his own settings.

General filtering of stocks according to price and volumes (based on the daily timeframe regardless of the screening timeframe):

- MiniStockPrice = Minimum stockprice, not to have penny stock in the results for example.
- VolumenCapitalExchange = Average volume expressed in capital (checked) or number of exchanges (unchecked). Filtering is done on the average volume to avoid erroneous results due to high volume peaks on a candle.
- AverageVolumePeriod = The period of the average volume,
- MinAverageVolume = Minimum Average Volume for filtering. In number of transactions or capital exchange, depending on the previous settings.

This filtering ensures a minimum of liquidity on the results returned by the screener.

The configurable criterias specific to the search :

- SMA20Bullish = the sma20 must be bullish. When this filter is activated the screener will return stocks with a bullish sma20. Checked = Filter ON / Unchecked = Filter OFF.
- SMA20Bearish = the sma20 must be bearish. When this filter is activated the screener will return stocks with a bearish sma20. Checked = Filter ON / Unchecked = Filter OFF.

NB : if filters are both activated or both deactivated, then the screener will return results with bearish and bullish sma20.

Results Rankings

Results are classified in the column "sma20 bearish / bullish" :

- 1 = sma20 is bearish
- 2 = sma20 is bullish



DISCLAIMER

Our proposed tools (indicators and screeners) are not investment advices but tools allowing everyone to find specific graphic configurations. Investing in the financial markets involves risks up to and including the total loss of capital.

The user of the proposed tools understands and accepts that the use of these tools is under his sole and entire responsibility. P2C Trading declines all responsibility in the use of the tools and the consequences that would result.