



Screeners of mobile average crossing mmX crosses mmY

Screeners of moving average crossings. Bullish and / or bearish crossings.
Working on all TimeFrames.

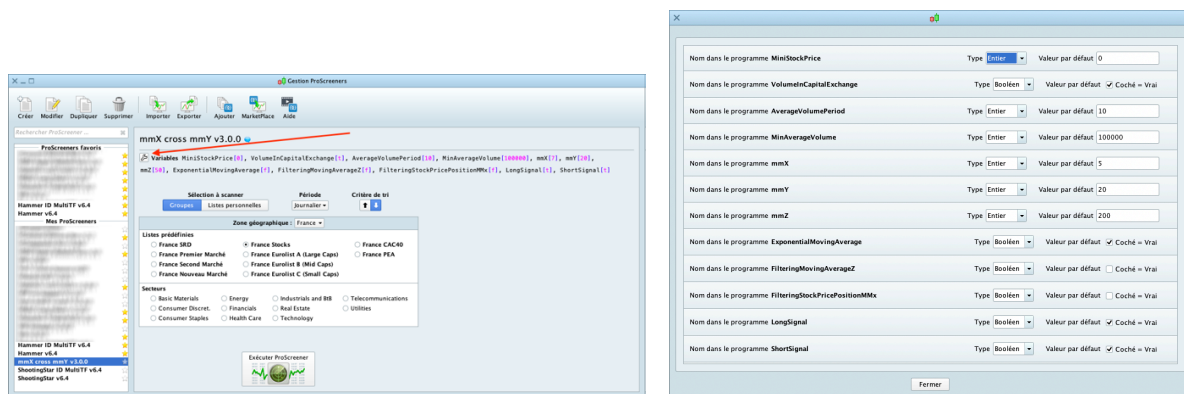
You can find all our instructions in video format on our Youtube channel (english subtitles available):

https://youtu.be/r4S9vC1y_ao

I. User Guide

The screener scans the stock market and return moving average crossings. The adjustable parameters allow you to modify the search criteria like switching from simple moving average to exponential moving average.

The following parameters can be adjusted in the "variables"  menu:



The values shown above are given as example and do not constitute an optimal or recommended setting, everyone should find his own settings.

General filtering of stocks according to price and volumes (based on the daily timeframe regardless of the screening timeframe):

- MiniStockPrice = Minimum stockprice, not to have penny stock in the results for example.
- VolumeInCapitalExchange = Average volume expressed in capital (checked) or number of exchanges (unchecked). Filtering is done on the average volume to avoid erroneous results due to high volume peaks on a candle.

- AverageVolumePeriod = The period of the average volume,
- MinAverageVolume = Minimum Average Volume for filtering. In number of transactions or capital exchange, depending on the previous settings.

The configurable criterias specific to the search :

- MobileAverageX = period of the short moving average,
- MobileAverageXType = short moving average type as per :
0 = SMA / 1 = EMA / 2 = WMA / 3 = Wilder / 4 = Triangular / 5 = End point / 6 = Time series / 7 = Hull / 8 = ZeroLag
- MobileAverageY = period of the long moving average,
- MobileAverageYType = long moving average type as per :
0 = SMA / 1 = EMA / 2 = WMA / 3 = Wilder / 4 = Triangular / 5 = End point / 6 = Time series / 7 = Hull / 8 = ZeroLag
- FilteringMovingAverageZ = enabling the filtering with mobile average mmZ. When the filter is activated, the stock price must be above the mmZ to validate a bullish crossing, and stock price must be under the mmZ to validate a bearish crossing.
Checked = Filter ON / Unchecked = Filter OFF,
- MobileAverageZ = period of the filtering moving average,
- MobileAverageZType = filtering moving average type as per :
0 = SMA / 1 = EMA / 2 = WMA / 3 = Wilder / 4 = Triangular / 5 = End point / 6 = Time series / 7 = Hull / 8 = ZeroLag
- FilteringStockPricePositionMMx = enabling the filtering with stock price above the moving average X when bullish crossings, and stock price under the moving average X when bearish crossings. The purpose of this filter is to avoid "false crossings" due to an exceptional movement of the stock price instead of a real change in the trend.
Checked = Filter ON / Unchecked = Filter OFF,
- LongSignal = Enabling bullish crossings search. When this setting is deactivated bullish crossings won't be displayed. Checked = Activated / Unchecked = Disactivated,
- ShortSignal = Enabling bearish crossings search. When this setting is deactivated bearish crossings won't be displayed. Checked = Activated / Unchecked = Disactivated.

Results Rankings

Results are classified by the "Long / Short" column as follows :

- 1 = bullish engulfing
- -1 = bearish engulfing

NB: Pay attention to have the same parameters in the indicator and the screener, in order to have the indicator showing screener's result on graph



DISCLAIMER

Our proposed tools (indicators and screeners) are not investment advices but tools allowing everyone to find specific graphic configurations. Investing in the financial markets involves risks up to and including the total loss of capital.

The user of the proposed tools understands and accepts that the use of these tools is under his sole and entire responsibility. P2C Trading declines all responsibility in the use of the tools and the consequences that would result.