



## Range Screener

You can find all our instructions in video format on our Youtube channel (english subtitles available):

<https://youtu.be/kF8nvJ448yg>


### I. User Guide

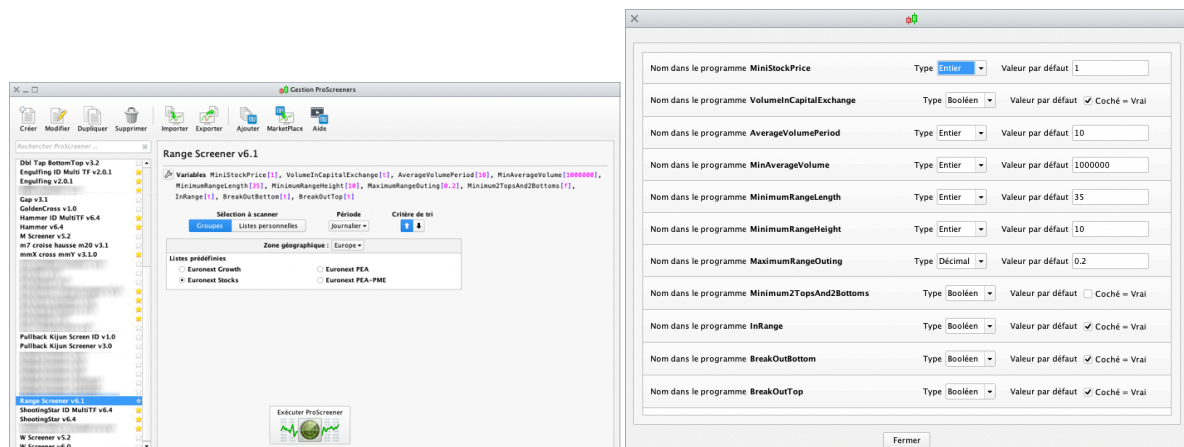
Scanning the market for stock price in range.

Working on all TimeFrames, preferred 4 hours and upper timeframes.

#### Fixed Criteria :

- scanning the last 150 candles,
- tops must be spaced at least with 15 candles,
- bottoms must be spaced at least with 15 candles,
- all keypoints are candle's body, not wicks.

The following parameters can be adjusted in the "variables"  menu:



The values shown above are given as example and do not constitute an optimal or recommended setting, everyone should find his own settings.

**General filtering of stocks according to price and volumes (based on the daily timeframe regardless of the screening timeframe):**

- MiniStockPrice = Minimum stockprice, not to have penny stock in the results for example.
- VolumeInCapitalExchange = Average volume expressed in capital (checked) or number of exchanges (unchecked). Filtering is done on the average volume to avoid erroneous results due to high volume peaks on a candle.
- AverageVolumePeriod = The period of the average volume,
- MinAverageVolume = Minimum Average Volume for filtering. In number of transactions or capital exchange, depending on the previous settings.

This filtering ensures a minimum of liquidity on the results returned by the screener.

**The configurable criterias specific to the search :**

- MinimumRangeLength = minimum length of the range, expressed in number of candle,
- MinimumRangeHeight = minimum range height, expressed in percentage,
- MaximumRangeOuting = maximum outing over and under the range, expressed as a multiple of the range height. For example 0.2 so that the excesses are at maximum 0.2 x the height of the range. Wicks are not taken into account, only bodies (closing or opening price).
- Minimum2TopsAnd2Bottoms = filtering results with 2 contacts on range top and 2 contacts on range, alternating between top and bottom. Checked = Filter ON / Unchecked = Filter OFF,
- InRange = filtering results with current stockprice in the range. Checked = Filter ON / Unchecked = Filter OFF,
- BreakOutBottom = filtering results with current stockprice breaking out the bottom of the range. Checked = Filter ON / Unchecked = Filter OFF,
- BreakOutTop = filtering results with current stockprice breaking out the top of the range. Checked = Filter ON / Unchecked = Filter OFF.

When *InRange* / *BreakOutBottom* / *BreakOutTop* are all 3 unchecked, only the titles inside the range come out, as when only *Inrange* is checked.

## Results Rankings

Results are classified in the column "High / Low / BO" :

- 1 = stockprice in over the middle of the Range
- 2 = stockprice in under the middle of the Range
- 10 = stockprice breaking top of Range
- 20 = stockprice breaking bottom of Range

**NB: Pay attention to have the same parameters in the indicator and the screener, in order to have the indicator showing screener's result on graph.**



### DISCLAIMER

Our proposed tools (indicators and screeners) are not investment advices but tools allowing everyone to find specific graphic configurations.

Investing in the financial markets involves risks up to and including the total loss of capital.

The user of the proposed tools understands and accepts that the use of these tools is under his sole and entire responsibility. P2C Trading declines all responsibility in the use of the tools and the consequences that would result.