



Highest Over X Periods Screener **Lowest Over X Periods Screener**

Scanning the market for stock near the highest / lowest over X periods.

Working on all TimeFrames.

I. Quick User Guide

The following parameters can be adjusted in the "variables"  menu:

General filtering of stocks according to price and volumes (based on the daily timeframe regardless of the screening timeframe):

- MiniStockPrice = Minimum stockprice,
- VolumeInCapitalExchange = Average volume expressed in capital (checked) or number of exchanges (unchecked),
- AverageVolumePeriod = The period of the average volume,
- MinAverageVolume = Minimum Average Volume.

The configurable settings specific to the search :

- NumberCandlesScanned = number of candles scanned,
- MaxiPercentageUnderAboveHighest (Lowest) = maximum percentage from actual stockprice to the detected highest / lowest.

Results Rankings

Results are classified in the column "% from Highest / Lowest" according to the distance from actual price to the detected highest / lowest.


II. Detailed User Guide

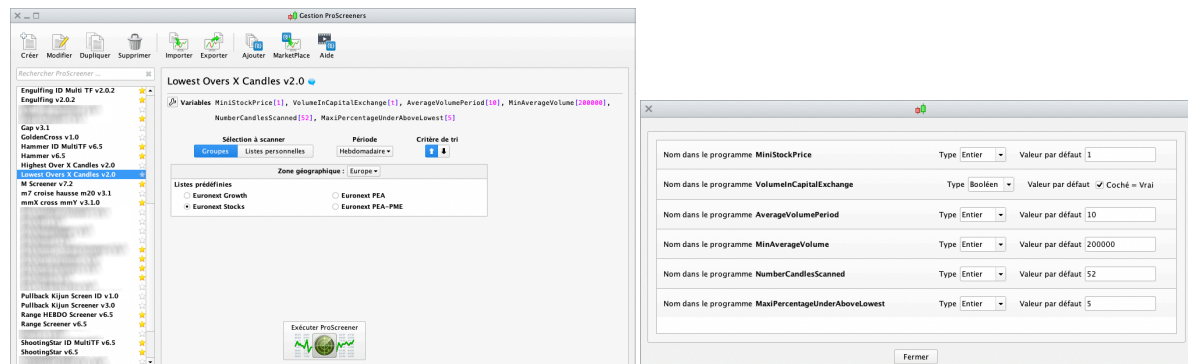
Scanning the market for stock near the highest / lowest over X periods.

Working on all TimeFrames.

Fixed Criteria :

- Highest / Lowest is counted on the closings, not on the wicks,
- Scanning is done on X periods before the actual candle.

The following parameters can be adjusted in the "variables"  menu:



The values shown above are given as example and do not constitute an optimal or recommended setting, everyone should find his own settings.

General filtering of stocks according to price and volumes (based on the daily timeframe regardless of the screening timeframe):

- MiniStockPrice = Minimum stockprice, not to have penny stock in the results for example.
- VolumeInCapitalExchange = Average volume expressed in capital (checked) or number of exchanges (unchecked). Filtering is done on the average volume to avoid erroneous results due to high volume peaks on a candle.
- AverageVolumePeriod = The period of the average volume,
- MinAverageVolume = Minimum Average Volume for filtering. In number of transactions or capital exchange, depending on the previous settings.

This filtering ensures a minimum of liquidity on the results returned by the screener.

The configurable criterias specific to the search :

- NumberCandlesScanned = number of candles scanned,
- MaxiPercentageUnderAboveHighest (Lowest) = maximum percentage from actual stockprice to the detected highest / lowest.

Results Rankings

Results are classified in the column "% from Highest / Lowest" according to the distance from actual price to the detected highest / lowest.



DISCLAIMER

Our proposed tools (indicators and screeners) are not investment advices but tools allowing everyone to find specific graphic configurations. Investing in the financial markets involves risks up to and including the total loss of capital.

The user of the proposed tools understands and accepts that the use of these tools is under his sole and entire responsibility. P2C Trading declines all responsibility in the use of the tools and the consequences that would result.