



RSI Oversold BreakOut Screener

1/ Screener All Timeframes

2/ Screener Multi Timeframes for Intraday

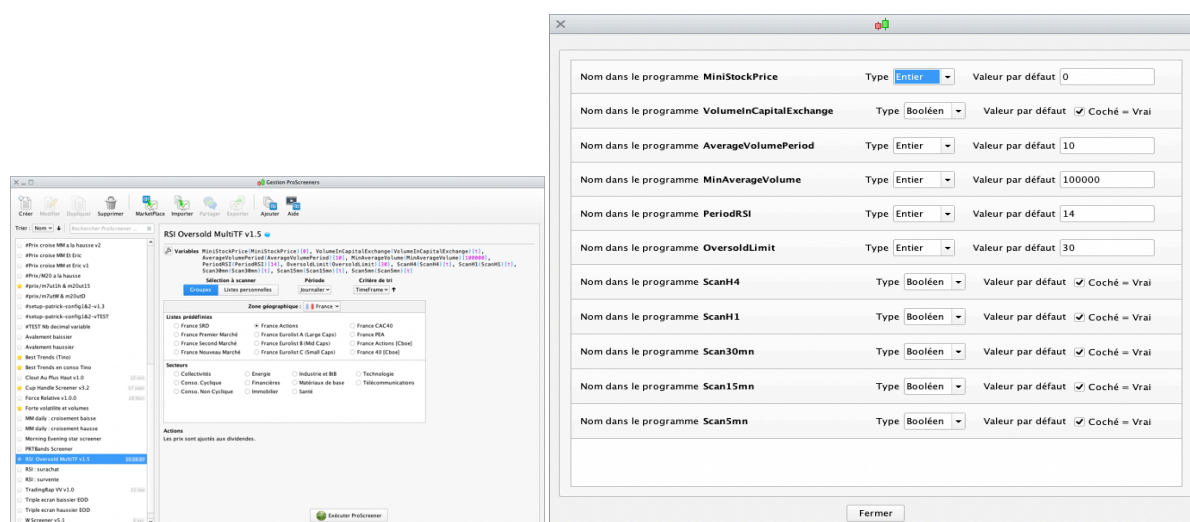
Scanning the market for stock price with the RSI crossing over the oversold limit.

Screener 1 : Working on all TimeFrames.

Screener 2 : Works on mutli timeframe from 4 hours to 5 minutes whatever is the screener timeframe selected.

I. Detailed User Guide

The following parameters can be adjusted in the "variables"  menu:



The values shown above are given as example and do not constitute an optimal or recommended setting, everyone should find his own settings.

General filtering of stocks according to price and volumes (based on the daily timeframe regardless of the screening timeframe):

- MiniStockPrice = Minimum stockprice, not to have penny stock in the results for example.
- VolumelnCapitalExchange = Average volume expressed in capital (checked) or number of exchanges (unchecked). Filtering is done on the average volume to avoid erroneous results due to high volume peaks on a candle.
- AverageVolumePeriod = The period of the average volume,
- MinAverageVolume = Minimum Average Volume for filtering. In number of transactions or capital exchange, depending on the previous settings.

This filtering ensures a minimum of liquidity on the results returned by the screener.

The configurable criterias specific to the search :

- PeriodRSI = Period of the RSI,
- OversoldLimit = Limit / threshold for the cross over to detect,

Criteria specific to the multi timeframe screener :

- ScanH4 = Activating 4 hours timeframe scanning. Checked = ON / Unchecked = OFF.
- ScanH1 = Activating 1 hour timeframe scanning. Checked = ON / Unchecked = OFF.
- Scan30mn = Activating 30 minutes timeframe scanning. Checked = ON / Unchecked = OFF.
- Scan15mn = Activating 15 minutes timeframe scanning. Checked = ON / Unchecked = OFF.
- Scan5mn = Activating 5 minutes timeframe scanning. Checked = ON / Unchecked = OFF.

Results Rankings

Screener 1 : Results are sorted by the actual RSI value.

Screener 2 : Results are classified in the column "Timeframe" :

- 0 = 5 minutes timeframe
- 1 = 15 minutes timeframe
- 2 = 30 minutes timeframe
- 3 = 1 hour timeframe
- 4 = 4 hours timeframe



DISCLAIMER

Our proposed tools (indicators and screeners) are not investment advices but tools allowing everyone to find specific graphic configurations. Investing in the financial markets involves risks up to and including the total loss of capital. The user of the proposed tools understands and accepts that the use of these tools is under his sole and entire responsibility. P2C Trading declines all responsibility in the use of the tools and the consequences that would result.