



## **Weinstein Strategy Screener**

Works in Weekly TimeFrame, regardless of the selected TF in the screener menu.

**You can find all our instructions in video format on our Youtube channel (english subtitles available):**

<https://youtu.be/BNa3boZwhxI>

### **I. User Guide**

The screener scans the market for configurations in line with Weinstein's strategy, and the adjustable parameters allow you to modify the search criteria so that the results given are the ones you want.

Weinstein Strategy informations :


<https://tradingacademy-tradosaure.blogspot.com/2020/09/stan-weinstein-tutoriel-bourse-tradosaure.html>

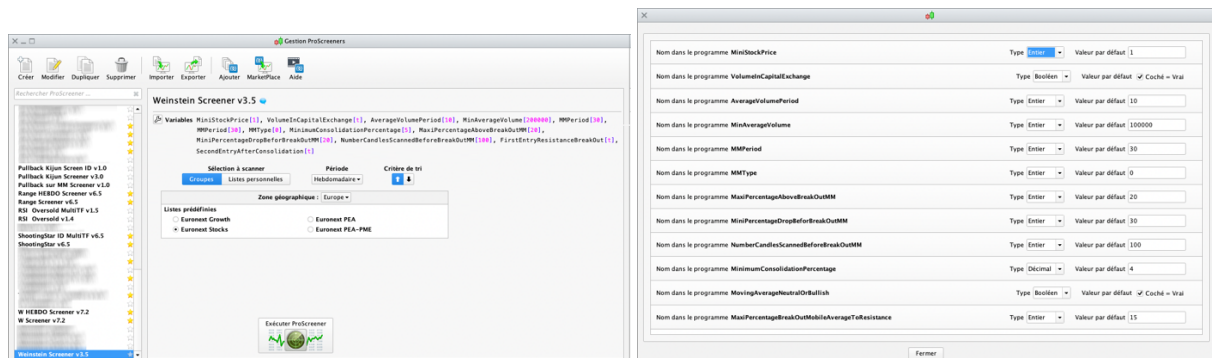
Depending on the settings chosen, the screener will display stocks whose price has broken the moving average and which :

- has not yet broken resistance (last high before breaking the moving average),
- has entered consolidation after breaking resistance.

### **Fixed Criteria :**

- the price has broken an X period moving average during the last 50 candles,
- the highs/lows defining resistance/consolidation/falls before a moving average breakout are counted in candlestick bodies excluding wicks,
- the consolidation low after a moving average breakout is above the moving average,
- the high and low points which validate the fall before the moving average is broken must be 8 candles apart, and must be before the resistance (last high before the moving average is broken).

The following parameters can be adjusted in the "variables" menu  :



The values shown above are given as example and do not constitute an optimal or recommended setting, everyone should find his own settings.

### **General filtering of stocks by price and volume (based on the daily timeframe regardless of the TF selected for screening) :**

- MiniStockPrice = Minimum price, so that there are no pennies in the results, for example.
- VolumInCapitalExchange = Average volume expressed in capital (checked) or in number of trades (unchecked). Filtering is done on the average volume to avoid erroneous results due to high volume peaks on a candle.
- AverageVolumePeriod = The average volume period.
- MinAverageVolume = Minimum average volume for filtering. In number of transactions or in capital, depending on the previous choice.

This filtering ensures a minimum of liquidity on the stocks that will be returned by the screener.

### **Configurable search criteria :**

- MMPeriod = moving average period,
- MMType = type of moving average calculation, as follows
  - 0 = SMA
  - 1 = EMA
  - 2 = WMA
  - 3 = Wilder
  - 4 = Triangular
  - 5 = End point
  - 6 = Time series
  - 7 = Hull
  - 8 = ZeroLag
- MaxiPercentageAboveBreakOutMM = maximum percentage of the current price above the price at which the moving average has been broken. Helps avoid "too late to enter" configurations,
- MiniPercentageDropBeforeBreakOutMM = minimum percentage price drop in the Y candles (Y defined in the following variable) preceding the moving average breakout, (used to validate a phase 4 before the moving average breakout),
- NumberCandlesScannedBeforeBreakOutMM = number of candles scanned before the moving average breakout to validate the minimum price fall before the breakout, in order to have more or less long phase 1 periods,
- MinimumConsolidationPercentage = minimum consolidation percentage following break of the moving average,
- MovingAverageNeutralOrBullish = activation of the filter to have a neutral or bullish moving average on the moving average breakout zone. Ticked = On / Unticked = Off.
- MaxiPercentageBreakOutMobileAverageToResistance = maximum percentage between the moving average breakout and resistance (last high before breakout). Ensures that the stop is not too far away at the resistance breakout.

### **Résultats Ranking :**

The results are classified in the "Trade Entry" column as follows:

- 102 = Entry n°2 / Reinforcement configuration, breaking out of consolidation resistance
- 101 = Entry n°1 configuration, breaking out of pre-breaking moving average resistance
- 2 = Entry n°2 / Reinforcement configuration
- 1 = Entry n°1 configuration

NB: Pay attention to have the same parameters in the indicator and the screener, in order to have the indicator showing screener's result on graph.



#### DISCLAIMER

Our proposed tools (indicators and screeners) are not investment advices but tools allowing everyone to find specific graphic configurations.

Investing in the financial markets involves risks up to and including the total loss of capital.

The user of the proposed tools understands and accepts that the use of these tools is under his sole and entire responsibility. P2C Trading declines all responsibility in the use of the tools and the consequences that would result.