



Three Line Break Reversal Indicator

Working on all timeframes.

Displays Three Line Break (3LB) reversal candlesticks.

Works on both 3LB and Price charts.

I. User Guide

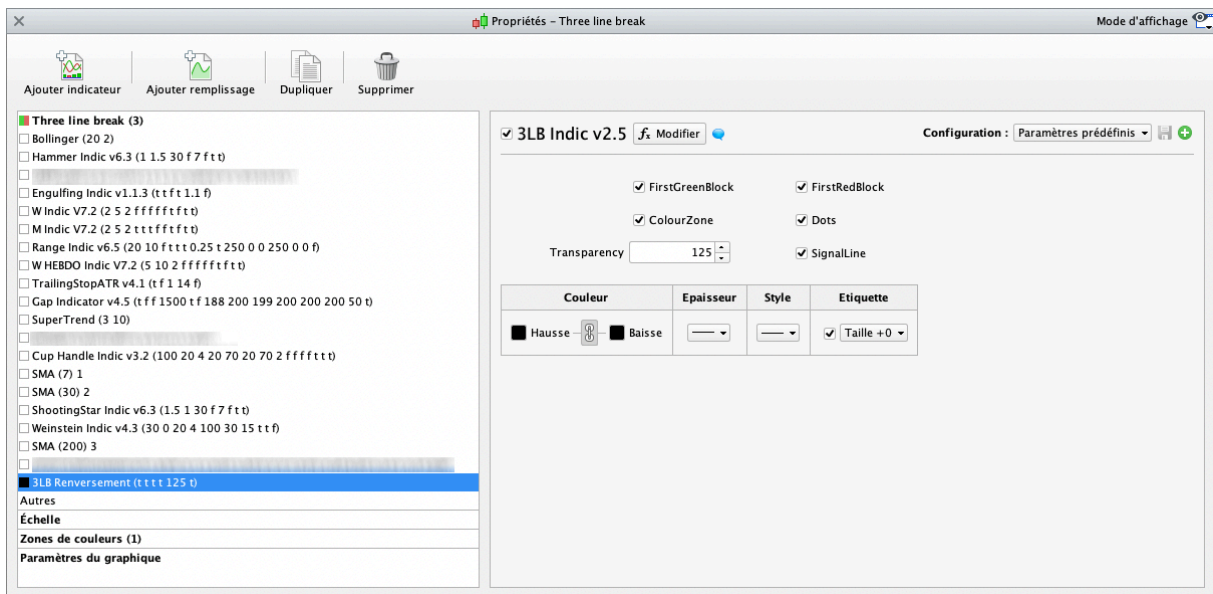
Displays Three Line Break (3LB) reversal candlesticks.

Works on 3LB charts, as well as on Price charts.

You can find all our instructions in video format on our Youtube channel (english subtitles available) :

<https://youtu.be/rKVnxCVSh0s>

Display depends on the settings available in the configuration menu :

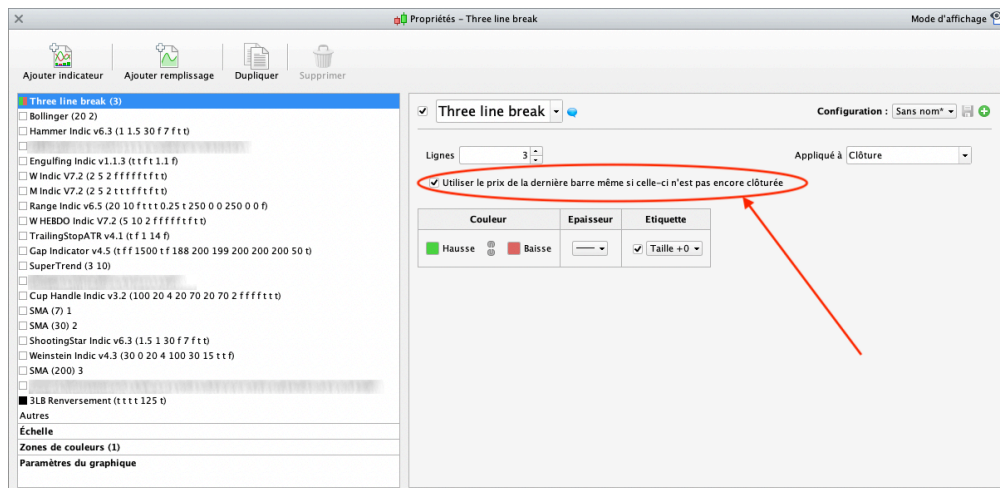


The values shown above are given as example and do not constitute an optimal or recommended setting, everyone should find his own settings.

- FirstGreenBlock = displays 1st green blocks. Checked = ON / Unchecked = OFF,
- FirstRedBlock = displays 1st red blocks. Checked = ON / Unchecked = OFF,
- ColourZone = activates the display of colour zones. Checked = ON / Unchecked = OFF,
- Dots = activates the display of green / red dots. Checked = ON / Unchecked = OFF,
- Transparency = adjusts transparency. 0 = Invisible / 255 = 100%
- SignalLine = activates the display of the signal line (1 / 0 / -1). Checked = ON / Unchecked = OFF.

⚠ WARNING ⚠

For the chart to correctly display the block found in the screener, the 3LB must be configured so that "Use the price of the last bar even if it is not yet closed" is ticked.

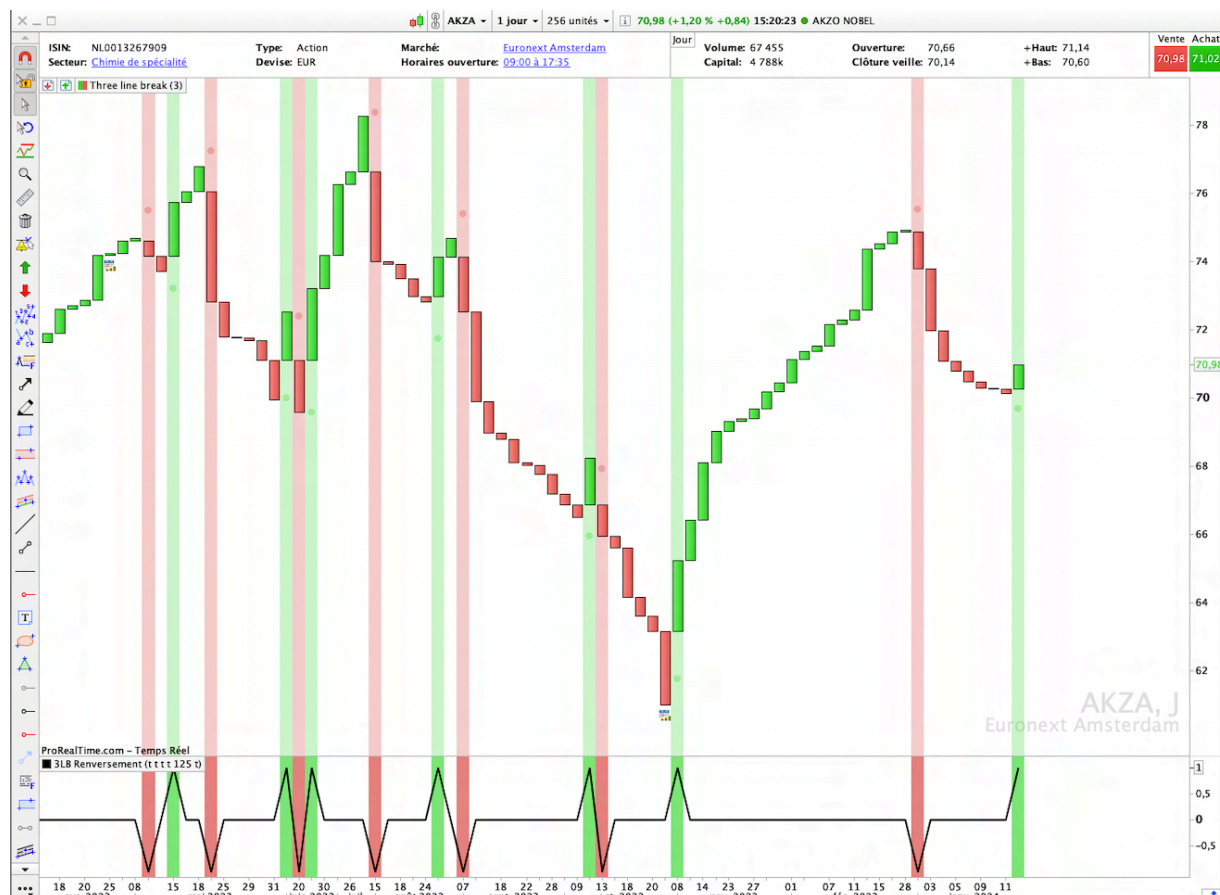


The indicator can be displayed on both 3LB and Price charts.

The Green and Red dots in the images below are the 1st green and red blocks on the 3LB chart, and the corresponding candles on the Price chart.



The indicator can be displayed on the chart or in a window below the price (like the RSI, for example).



To avoid overloading the graph, deactivate the coloured areas and the signal line and keep the dots.



The Signal line is useful for setting an alarm when the indicator is in a window below the graph. The signal line is 0 and changes to 1 = first green block and changes to -1 = first red block. Example: set an alarm to 1 to be warned when the first green block appears.



DISCLAIMER

Our proposed tools (indicators and screeners) are not investment advices but tools allowing everyone to find specific graphic configurations. Investing in the financial markets involves risks up to and including the total loss of capital. The user of the proposed tools understands and accepts that the use of these tools is under his sole and entire responsibility. P2C Trading declines all responsibility in the use of the tools and the consequences that would result.