



Indicator Bullish and/or Bearish Engulfings

This indicator draws :

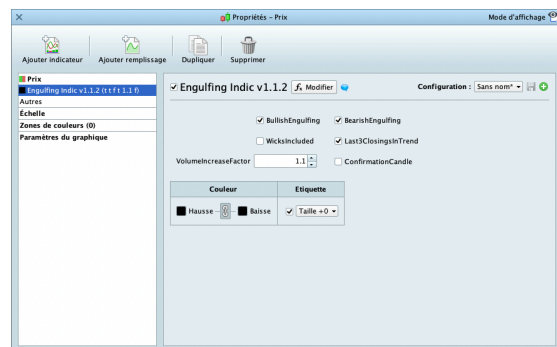
- Light green arrow under bullish engulfing
- Light red arrow above bearish engulfing

You can find all our instructions in video format on our Youtube channel (english subtitles available):

<https://youtu.be/OiWdxWVEWsY>

I. Detailed User Guide

The indicator will display the arrows on engulfing candles according to the adjustable criterias. So you can display only the bullish engulfing, with or without volume increase, etc...



The values shown above are given as example and do not constitute an optimal or recommended setting, everyone should find his own settings.

- BullishEngulfing = Enabling bullish engulfings, Checked = Activated / Unchecked = Disactivated. When this setting is disactivated bullish engulfings won't be displayed.

- BearishEngulfing = Enabling bearish engulfings, Checked = Activated / Unchecked = Disactivated. When this setting is disactivated bearish engulfings won't be displayed.

- WicksIncluded = filtering to display engulfings only if they engulf the entire previous candle, wicks included. Checked = Activated / Unchecked = Disactivated,

- Last3ClosingsInTrend = because engulfing candles are reversal signal, we can activate / desactivate this filtering to display the engulfings only if they appear after a trend of minimum

3 closings in a trend opposite to the engulfing: the 3 closings before a bullish engulfing must be bearish, and vice versa. Checked = Activated / Unchecked = Disactivated,

- VolumeIncreaseFactor = minimum volume increase factor on the engulfing. It's a filtering to display engulfings only if its volume is at least equal to X times the volume of the previous candle. Where X is the volume increase factor. For example : if you want the engulfing to have at least 1,5 times the volume of the previous candle, just set *VolumeIncreaseFactor = 1.5*.

- ConfirmationCandle = the indicator will only display the engulfing if it has had a confirmation candle following it. So, a candle closing higher than the bullish engulfing close and vice versa. Note that the arrow remains on the engulfing candle, not on the confirmation candle. Checked = Activated / Unchecked = Disactivated.

NB: Pay attention to have the same parameters in the indicator and the screener, in order to have the indicator showing screener's result on graph.



DISCLAIMER

Our proposed tools (indicators and screeners) are not investment advices but tools allowing everyone to find specific graphic configurations.

Investing in the financial markets involves risks up to and including the total loss of capital.

The user of the proposed tools understands and accepts that the use of these tools is under his sole and entire responsibility. P2C Trading declines all responsibility in the use of the tools and the consequences that would result.