



## Indicator of Bollinger on lower TimeFrames

Visit our website [www.p2c-Trading.fr](http://www.p2c-Trading.fr) to discover all our tools dedicated to trading on ProRealTime.

This indicator displays Bollinger lines from different timeframes on lower timeframes.

Working on all TimeFrames.

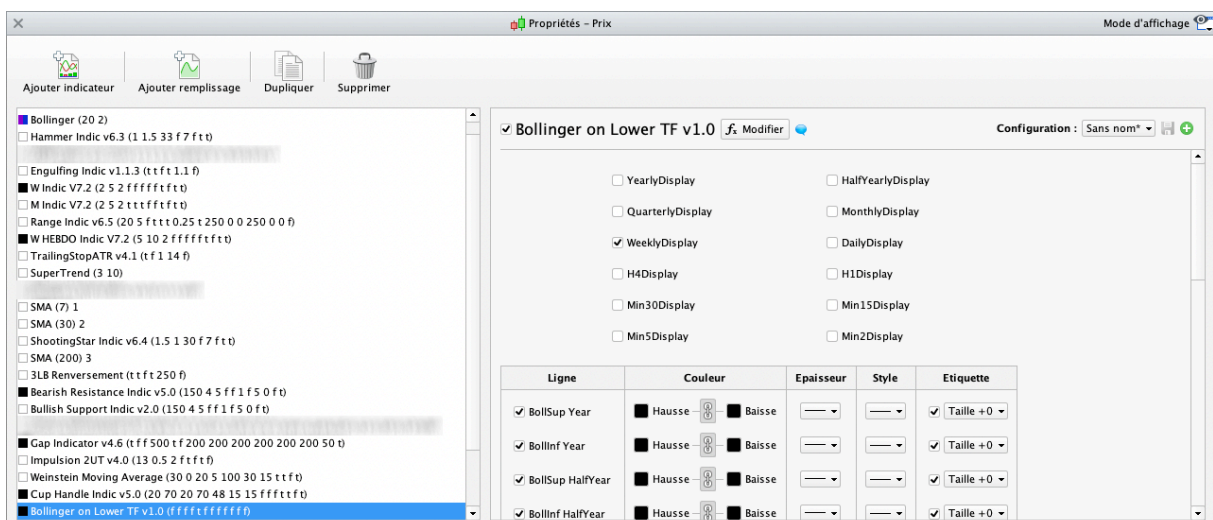
Even if a lower timeframe is activated, the indicator will display only upper timeframes.

Be Careful : the indicator can display the moving average ONLY if the data loaded on your graph is long enough to have the period needed to calculate moving average.

**⚠ WARNING :** When opening a graph, discrepancies may appear between the values displayed and the real values of the moving averages of the upper timeframes. This discrepancy disappears when the price is updated on the first transaction made after opening the chart. This is the time for the data to be updated.

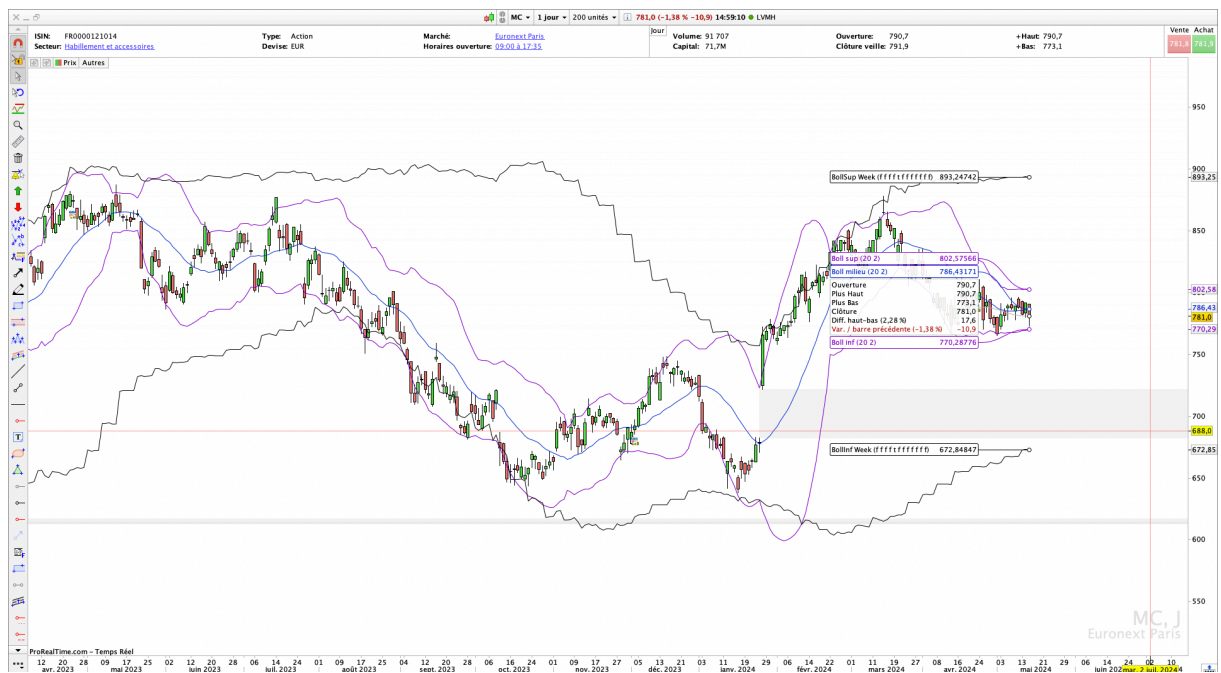
### I. User Guide

Display depends on the adjustable settings allowing to choose period of moving averages as well as between simple or exponential moving average.



The values shown above are given as example and do not constitute an optimal or recommended setting, everyone should find his own settings.

- YearlyDisplay TO Min2Display = activate displays for following Timeframes
  - Year
  - HalfYear
  - Quarter
  - Month
  - Week
  - Day
  - 4 hours
  - 1 hour
  - 30 minutes
  - 15 minutes
  - 5 minutes
  - 2 minutes



#### **DISCLAIMER**

Our proposed tools (indicators and screeners) are not investment advices but tools allowing everyone to find specific graphic configurations.

Investing in the financial markets involves risks up to and including the total loss of capital.

The user of the proposed tools understands and accepts that the use of these tools is under his sole and entire responsibility. P2C Trading declines all responsibility in the use of the tools and the consequences that would result.