



## Marubozu Screener


You can find all our instructions in video format on our Youtube channel (english subtitles available):

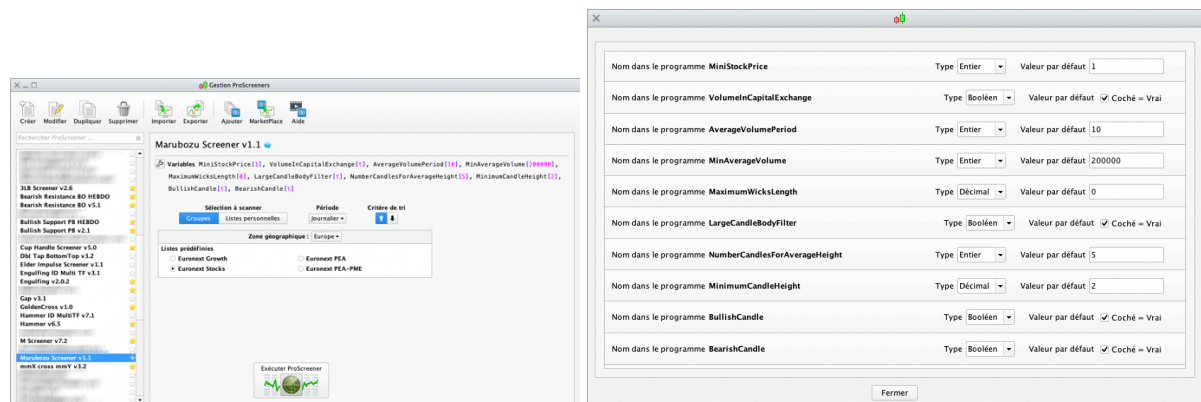
<https://youtu.be/OABHT00Xqd8>

### I. User Guide

Scans the market for stocks making a bullish Marubozu or a bearish Morubozu.

Works on all timeframes.

**The following parameters can be adjusted in the "variables" menu  :**



The values shown above are given as example and do not constitute an optimal or recommended setting, everyone should find his own settings.

### General filtering of stocks by price and volume (based on the daily timeframe regardless of the TF selected for screening) :

- MiniStockPrice = Minimum price, so that there are no pennies in the results, for example.
- VolumeInCapitalExchange = Average volume expressed in capital (checked) or in number of trades (unchecked). Filtering is done on the average volume to avoid erroneous results due to high volume peaks on a candle.
- AverageVolumePeriod = The average volume period.
- MinAverageVolume = Minimum average volume for filtering. In number of transactions or in capital, depending on the previous choice.

This filtering ensures a minimum of liquidity on the stocks that will be returned by the screener.

### Configurable search criteria :

- MaximumWicksLength = maximum length of the top and bottom wicks. Expressed as a multiple of the body of the candle.
- LargeCandleBodyFilter = activation of "large candle" filtering. Characterised by the 2 variables below. Ticked = activated / Unticked = deactivated.
- NumberCandlesForAverageHeight = number of previous candles used to determine the average candle body size,
- MinimumCandleHeight = minimum size of the body of the current candle, expressed as a multiple of the average size of the last X candles,
- BullishCandle = activation of the search for bullish Marubozu. Ticked = activated / Unticked = deactivated.
- BearishCandle = activation of the search for bearish Morubozu. Ticked = activated / Unticked = deactivated.

### Results Rankings

Results are sorted in the screener list results to be easily checked.

- 1 = bullish Marubozu
- 2 = bearish Morubozu

**NB: Be careful to set the same parameters in the indicator and the screener, so that the screener results are shown correctly on the graph.**



#### **DISCLAIMER**

Our proposed tools (indicators and screeners) are not investment advices but tools allowing everyone to find specific graphic configurations. Investing in the financial markets involves risks up to and including the total loss of capital.

The user of the proposed tools understands and accepts that the use of these tools is under his sole and entire responsibility. P2C Trading declines all responsibility in the use of the tools and the consequences that would result.