



Bollinger Bubbles Screener & Screener Multi TF

Scan the market for upper and lower Bollinger bubbles.

You can find all our instructions in video format on our Youtube channel (english subtitles available):

<https://www.youtube.com/@P2CTrading>


I. User Guide

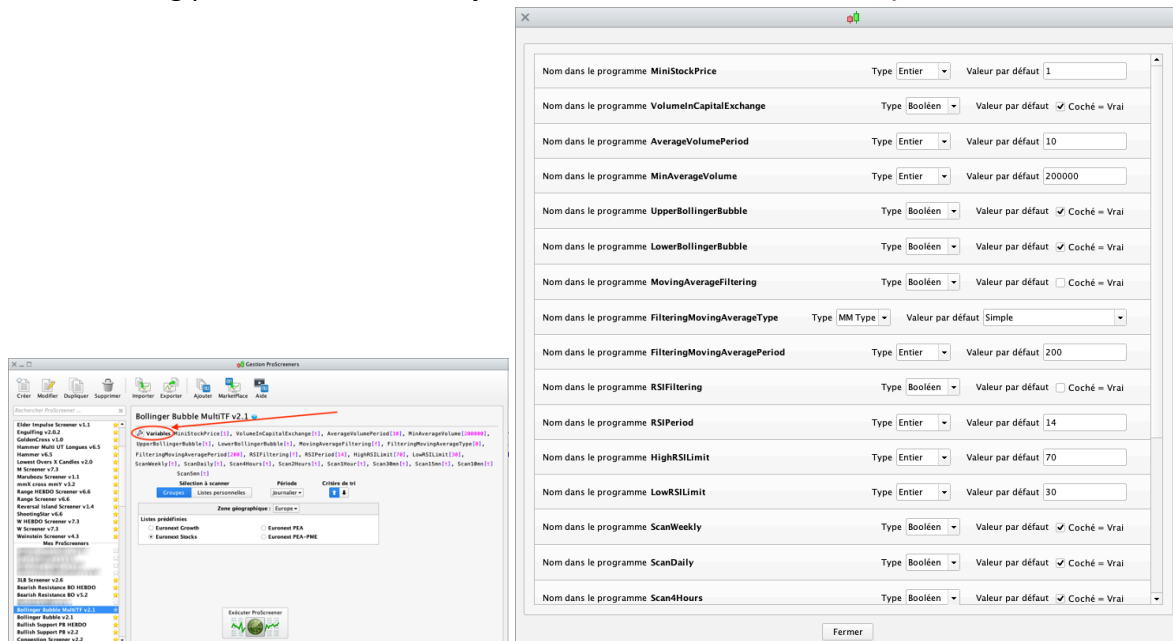
Settings are identical on both screeners.

The Screener scans the market in the timeframe defined by the screener drop-down menu.

The Multi TimeFrame screener scans up to 9 TF simultaneously (regardless of the TF in the screener drop-down menu): 5' / 10' / 15' / 30' / 1h / 2h / 4h / Daily / Weekly

Screeners scan the market for upper and/or lower Bollinger Bubbles. Adjustable parameters allow you to modify the search criteria.

The following parameters can be adjusted in the 'variables' menu  :



The values shown above are given as example and do not constitute an optimal or recommended setting.

General filtering of stocks by price and volume (based on the daily timeframe regardless of the TF selected for screening) :

- MiniStockPrice = Minimum price, so that there are no pennies in the results, for example.
- VolumeInCapitalExchange = Average volume expressed in capital (checked) or in number of trades (unchecked). Filtering is done on the average volume to avoid erroneous results due to high volume peaks on a candle.
- AverageVolumePeriod = The average volume period.
- MinAverageVolume = Minimum average volume for filtering. In number of transactions or in capital, depending on the previous choice.

This filtering ensures a minimum of liquidity on the stocks that will be returned by the screener.

Configurable search criteria:

- UpperBollingerBubble = activate upper bollinger bubble search. Checked = ON / Unchecked = OFF,
- LowerBollingerBubble = activate lower bollinger bubble search. Checked = ON / Unchecked = OFF,
- MovingAverageFiltering = activate moving average filtering. Stockprice must be above the moving average for lower bollinger bubble, and stockprice must be under moving average for upper bollinger bubble. Checked = ON / Unchecked = OFF
- FilteringMovingAverageType = type of the filtering moving average (SMA, EMA, ...).
- FilteringMovingAveragePeriod = period of the filtering moving average.
- FilteringRSI = activate the RSI filtering. Checked = ON / Unchecked = OFF,
- RSIPeriod = period of the filtering RSI,
- HighRSILimit = high threshold for validating the RSI filter for upper Bollinger bubbles (the RSI must be above this limit to validate the bubble),
- LowRSILimit = low threshold for validating the RSI filter for lower Bollinger bubbles (the RSI must be under this limit to validate the bubble),
- BollingerPeriod = period used for the Bollinger bands
- BollingerDeviation = standard deviation used for the Bollinger bands

- ScanWeekly to Scan5mn = activates the diffrents timeframes scanned (only available on the multi timeframe screener)

Results ranking

The results are classified in the 'Boll+ / Boll-' column as follows:

Screener

- 1 = upper bubbles
- 2 = lower bubbles

Screener Multi TF

- 91 / 92 = upper / lower bubbles weekly TF
- 81 / 82 = upper / lower bubbles daily TF
- 71 / 72 = upper / lower bubbles 4 hours TF
- 61 / 62 = upper / lower bubbles 2 hours TF
- 51 / 52 = upper / lower bubbles 1 hour TF
- 41 / 42 = upper / lower bubbles 30 min TF
- 31 / 32 = upper / lower bubbles 15 min TF
- 21 / 22 = upper / lower bubbles 10 min TF
- 11 / 12 = upper / lower bubbles 5 min TF



DISCLAIMER

Our proposed tools (indicators and screeners) are not investment advices but tools allowing everyone to find specific graphic configurations. Investing in the financial markets involves risks up to and including the total loss of capital.

The user of the proposed tools understands and accepts that the use of these tools is under his sole and entire responsibility. P2C Trading declines all responsibility in the use of the tools and the consequences that would result.